



GMT MONTHLY MEMBERSHIP PROGRESS REPORT

Results as of: 5/31/2020

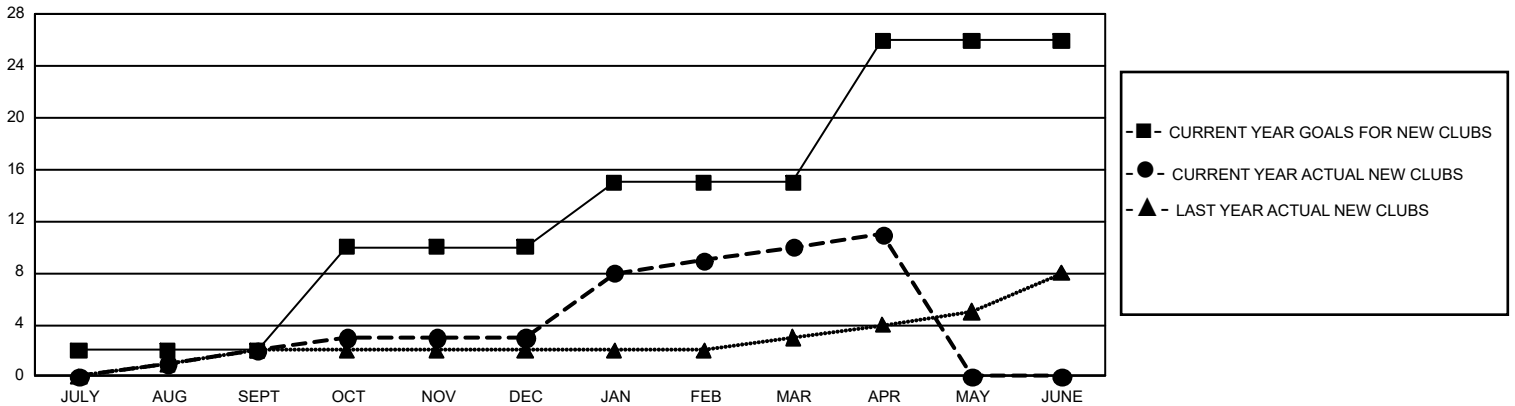
GMT Constitutional Area 7, Group A

GMT: OPEN

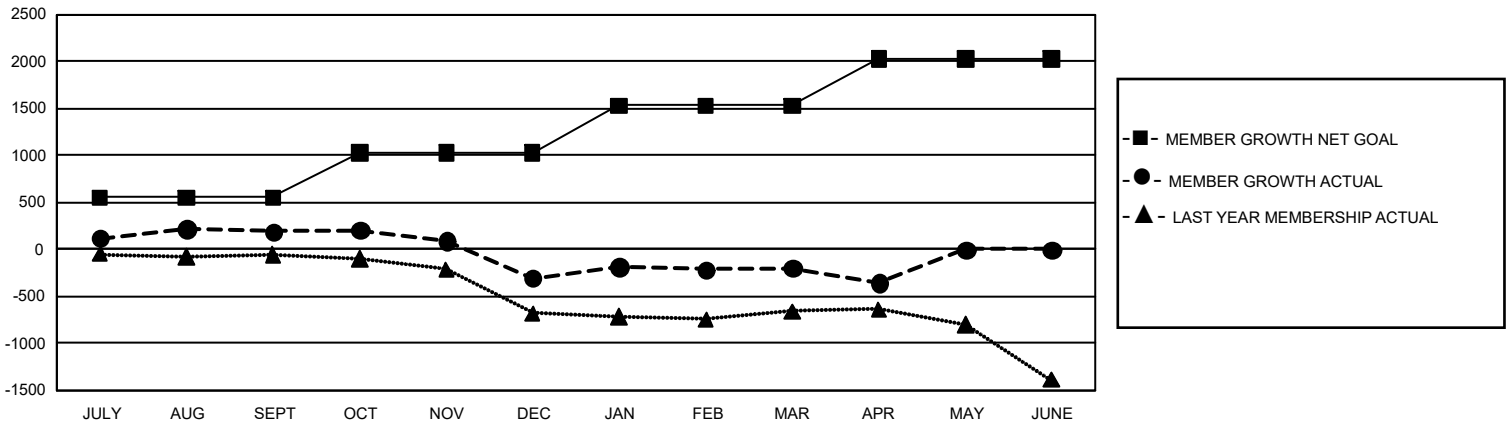
REPORT DOES NOT INCLUDE CLUBS IN UNDISTRICTED AREAS.

Clubs				Members			
RESULTS FOR 2019-2020				RESULTS FOR 2019-2020			
QUARTER	NEW CLUB GOAL	NEW CLUBS	DROPPED CLUBS	QUARTER	MEMBER GROWTH NET GOAL	MEMBER GROWTH ACTUAL	DROPPED MEMBERS ACTUAL (including transfers)
JULY/AUG/SEPT	6	2	7	JULY/AUG/SEPT	1,656	1,100	774
OCT/NOV/DEC	24	1	4	OCT/NOV/DEC	1,443	685	1,083
JAN/FEB/MAR	15	7	5	JAN/FEB/MAR	1,506	1,098	869
APR/MAY/JUNE	33	1	0	APR/MAY/JUNE	1,503	155	281

GOALS AND ACTUAL NEW CLUBS CUMULATIVE



GOALS AND ACTUAL MEMBERS CUMULATIVE



DROPPED CLUBS: 16	813 CLUBS OF 1,398 ADDED 1 OR MORE NEW MEMBERS	GENDER DISTRIBUTION MALE 18,840 (64.96%) FEMALE 10,161 (35.04%)
DROPPED MEMBERS DECEASED 331 CLUB CANCELLED 15 OTHER 2,659 <hr/> TOTAL 3,005	CLICK HERE FOR CUMULATIVE MEMBERSHIP DATA	TOTAL FAMILY UNIT MEMBERS 4,634 FAMILY MEMBERS PAYING HALF DUES 2,352